



Richmond
Landcare
Inc.

Annual Report

2019-2020

Endorsed by Committee

OCTOBER 2020 | PREPARED BY CHAIR, JIM KINKEAD



Richmond Landcare Inc.
● P.O. Box 525 Alstonville 2477 ● 0484 104 854
www.richmondlandcare.org
Facebook: Richmond Landcare Inc.

RICHMOND LANDCARE INCORPORATED

2019-20 ANNUAL REPORT

Contents

About Us	2
Who We Are.....	2
The Committee	2
Employees.....	4
Financial summary	5
Membership.....	6
Our Work	6
Projects	6
Landcare NSW Program	6
Relationships and Partnerships	7
Achievements	7
Moving Forward.....	9

About Us

Richmond Landcare Incorporated (RLI) is a non-profit community led Landcare network formed in 1998 to support Landcare in the Richmond River catchment, Bundjalung country.

RLI provides support to new and established Landcare Groups and supports best practice for managing land and water across all landscapes.

RLI is managed by a committee of volunteers drawn from representatives of its member groups and is a participating member of the regional Landcare network, North Coast Regional Landcare Network and the state group Landcare NSW.

Who We Are

The Committee



Chair: Jim Kinhead

Jim represents Tregeagle Landcare with 12 years experience with Landcare. Jim is President of Tregeagle Landcare, member of Richmond Landcare committee, member of North Coast Regional Landcare Network Executive and Landcare representative on the North Coast Local Land Services Weed & Pest Animal Advisory Committee.

Jim is retired from a career in NSW government in administration management at District, Regional and State level mainly with environmental departments.



Vice Chair: Shaun Eastment

Shaun represents Lennox Head Landcare, joining them in 2009. Prior to that she had a career in education for 32 years with a variety of leadership roles in schools. At the same time she was actively involved across the Sydney Metropolitan area in professional support for teacher education and across the state in programs to develop student participation in the sciences.



Secretary: Lyn Thomson

Lyn represents Bagot Park Landcare. She is also the Chair of Broadwater Koala Reserve Trust, and Secretary of Ballina Outrigger Canoe Club (BOCC), both members of Richmond Landcare. She has given up counting how many times she has now retired. Lyn joined RLI back in 2010 while still working as a school liaison officer. Since then she has gone on to work for RLI as their school's officer and in administrative support. Lyn has also worked for the Australian Native Bee Company as their educational officer, and providing admin management for her son's building business. Lyn enjoys writing grants and has a business called

Boutique Grants, writing grants for community organisations. Lyn paddles outriggers with her husband Steve at BOCC and is a Meliponist, a native bee keeper. Her worm farms are also expanding and Lyn loves gardening.



Treasurer: Peter Biddles

Peter represents Tuckombil Landcare. He is a retired Industrial Chemist, specialising in surface coatings, metallic and no-metallic corrosion, cathodic protection, adhesives and sealants. Peter lived and worked in South East Asia for 20 years as the CEO of a group of companies with manufacturing and sales operations in Indonesia, Singapore, Malaysia, Thailand, Hong Kong, and Japan. He returned to Australia and in 2001 moved to a 50 Ha property in Alstonville after retiring. He joined Tuckombil Landcare in 2005 and has been Treasurer since 2015. He and his wife downsized and sold the property two years ago and now live at Palm Lake.



Committee Member: Jeremy Stewart

Jeremy's family has been in the Wilsons River area for about 5 generations. He currently runs a small rural earthmoving business, though has past employment as a secondary teacher and professional basket maker. Jeremy and his family have been absolutely charmed by the variety of Landcare activities in and around Whian Whian for about 15 years. This has confirmed a deep appreciation and sense of custodianship for our landscape and the community of landcarers. He is drawn to matters of strategic catchment health and waterway appreciation, cultural heritage and reconciliation, conserving native biodiversity, and restorative land management. He advocates for nature based flood mitigation on the Lismore Floodplain Management Committee. He wants to support Richmond Landcare support the various expressions of environmental care in the community, and represents Whian Whian Landcare Inc.



Committee Member: David Griffiths

David represents Ballina Coastcare and is active in dune care activities and working with school groups to educate youth about the coastal environment of Ballina. Prior to relocating to East Ballina, David lived in North Qld and the Northern Territory and worked as a Horticulturist, Land Manager and Curator for Governments, resorts, and volunteer organisations. David is active in several community organisations in Ballina, a member of Ballina SES Unit and works part time.

Committee Member: Barry Jeffress, representing Tuckombil Landcare

Committee Member: Kelly Saunderson, representing Lennox Head Landcare

Committee Member: Neil Denison, representing Ballina Coastcare

Employees



Local Landcare Coordinator: Hannah Rice-Hayes

Hannah is the Local Landcare Coordinator for Richmond Landcare and has been in the role since 2012. She additionally coordinates the delivery of external grant projects for RLI in a Project Officer capacity. Hannah has spent the past 10 years working in on-ground and community-facing natural resource management and community engagement roles on the NSW North Coast. She has experience in delivering community consultation and capacity building projects in NRM and Sustainable Agriculture fields and expertise in conservation land management, weed control and community facilitation.

In her spare time she co-coordinates the Bush Fruits LGBTIQ+ and Clunes Landcare groups (RLI members), and is one of the two North Coast representatives on the NSW Landcare Council.



Figure 1: The RLI Team (Top row L-R: Shaun Eastment, Barry Jeffress, Kelly Saunderson, Lyn Thomson, David Griffiths. Bottom Row L-R: Hannah Rice-Hayes, Neil Denison, Jim Kinkead, Jeremy Stewart)

Financial summary

Income \$153,000 + Other income \$10,000 = Total Income \$163,000 Less Expenses \$110,150 = **Net Earnings \$52,850**

For brevity, the figures have been rounded as are the percentages in the charts and balance sheet numbers.

Income – The ‘other income’ is a Cash Flow Boost of \$10,000 required in the operating account during the year.

Expenses – Main expenses were salaries, administration and contract labour. Miscellaneous expenses included small amounts for training, travel and uniforms.

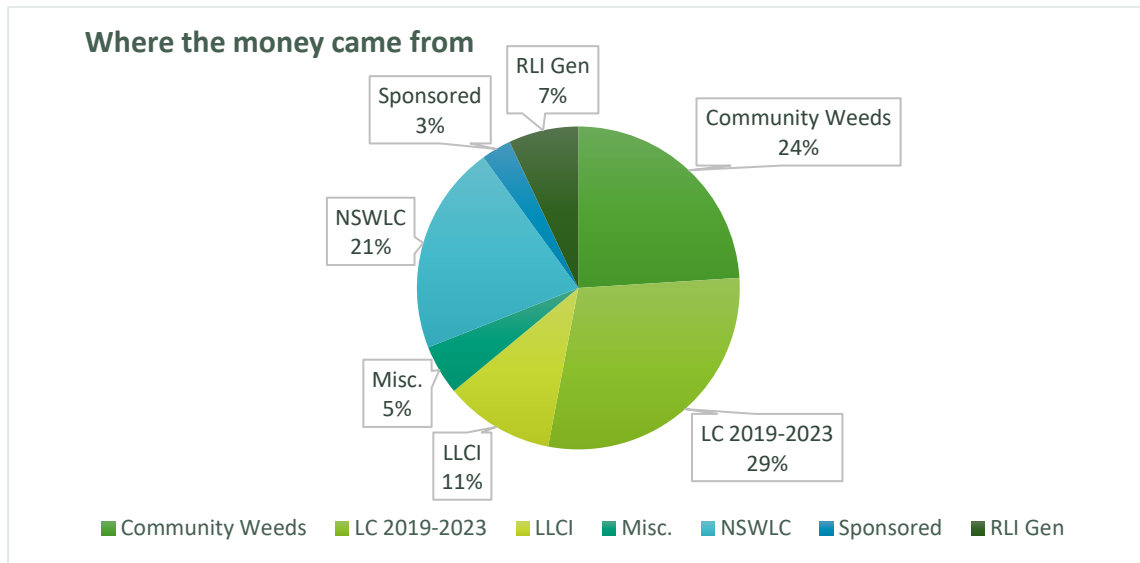


Figure 2: Income 2019-20

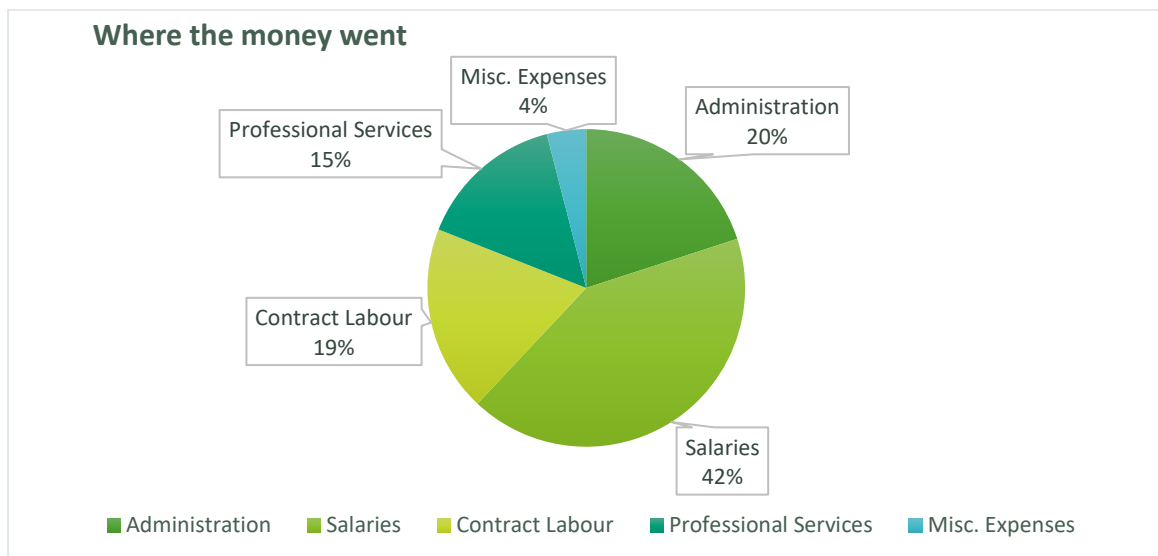


Figure 3: Expenses 2019-20

Membership

Membership of RLI is any Landcare-type groups in the Richmond River Catchment approved unanimously by the management committee. A life membership is offered at a fee determined by the committee.

Currently we have over 100 member groups.

Our Work

Projects

Table 1: Funded projects 2019-20

Project	Funded by	Amount	Period
NSW Landcare Program	Nth Coast Regional Landcare Network (NCRLN)	\$176,841	Jul 19 – Jun 23
Community Based Weeds – Lismore LGA	NCRLN	\$18,333	Aug 19 – May 20
Community Based Weeds – Ballina LGA	NCRLN	\$18,333	Aug 19 – May 20
Emigrant Creek Property Assessment	NCRLN	\$32,000	Sep 19 – Dec 20
Container Deposit Scheme Audit – Suspended due to Covid	Landcare NSW	\$140 + travel per audit	Jan 20 – Nov 21
Land for Wildlife Assessments	Community Environment Network	\$300 per assessment	Jul 19 – Jun 20
Bushfire Recovery - Nest Box Program	NCRLN/WWF	\$12,000	Jun 20 – Jun 21
Wildlife Refuge Outreach	Biodiversity Conservation Trust	\$6,511	Aug 19 – May 20

Landcare NSW Program

This Program is a collaborative endeavour of Local Land Services (LLS) and Landcare NSW Inc. (LNSW), supported by the NSW Government. It recognises the value of Government and Landcare working together and aims to support empowerment and partnership outcomes for both Landcarers and Local Land Services. The Program's purpose is to play a role in empowering local Landcare volunteers by contributing to the systems, partnerships and structures that underpin their capacity to achieve outcomes.

Under this program RLI has a contract with North Coast Regional Landcare Network (NCRLN) to employ a Local Landcare Coordinator (LLC). The role of the Coordinator is that of an enabler for local community Landcare. Local Coordinators will work with their host organisation and the Landcare groups and organisations of their area: to support and empower them to achieve their own goals; to participate in Landcare; to partner with Local Land Services; and to deliver on the target outcomes of the NSW Landcare Program

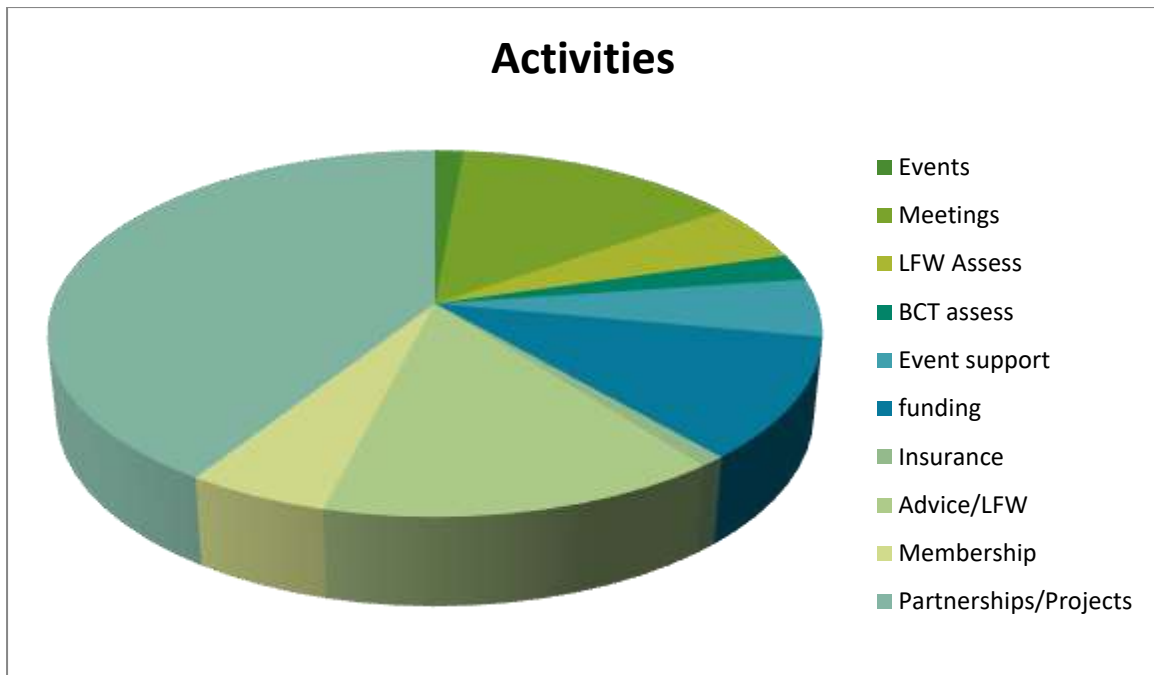


Figure 4: Local Landcare Coordinator activities break-down

Relationships and Partnerships

We have built relationships and partnerships with local organisations that support Landcare including:

- a MoU with Lismore City Council that helps us support Landcare groups and the broader Natural Resource Management (NRM) community
- an agreement with the Community Environment Network to carry out Land for Wildlife assessments
- ongoing working relationships with a wide range of organisations and networks, including Northern Rivers Science Hub, Northern Rivers Group of Environmental Educators, Ballina Shire Council, Ballina Shire Coastal Groups Committee, North Coast Local Land Services, Rous County Council
- working with neighbouring local Landcare networks and participating in the North Coast Regional Landcare Network including in cross-regional projects
- establishing a relationship with local political representatives

Achievements

Our key achievements for 2019-20 are:

- Initiated a proactive “engaging with our member groups” program
- Active committee with a unified vision which meets on a regular basis, has successfully transitioned to Zoom meetings and has finally successfully filled the long term vacancy in the Treasurer position

- Adapted to impacts of the Covid virus and conforming to NSW Government health requirements
- Strategic Plan review commenced
- Established a cooperative working relationship with Border Ranges-Richmond Valley Landcare Network
- Submitted responses/submissions to:
 - LNSW re membership review and national Landcare situation
 - Rous County Council Catchment Management Plan
 - LNSW and NCRLN re components of the NSW Landcare Program



Figure 5: Spot the landcarers at The Channon Market information stall (L-R Emma Stone BRRVLN, David Griffiths, Alison Ratcliffe BVL, Jim Kinkead, Hannah Rice-Hayes)

- Provided support to small Landcare groups for insurance
- Employed a Landcare Coordinator through NSW Landcare Program
- Reviewed/Established a number of policies including auspicing, covid safety, insurance, workplace safety
- Developed an action plan for the LCC and committee
- Applied for several projects via grant application or tender as proponent, including
 - NCLLS Community Based Weeds x 2- successful
 - Emigrant Creek Every Bit Counts project- successful
 - BCT Koala Habitat Tenders- Engagement- successful
 - BCT Wildlife Refuge Tenders- successful
- Participated in collaborative grant applications as a partner (not proponent), including;
 - Northern Rivers Science Hub Science Week grant- successful
 - Northern Rivers Science Hub Year Round grant- successful
 - LCC Wildlife Habitat Bushfire Recovery- Mt Nardi- unsuccessful
 - NCRLN Wildlife Habitat Bushfire Recovery- Mt Nardi- unsuccessful
 - NCRLN Increasing Resilience to Climate Change Community Grants- unsuccessful
 - NCRLN Bid for NSW Landcare Program- successful
 - DoPIE Climate Ready Revegetation Project- successful



Figure 6: 'To Feed or Not to Feed' Science in the Pub at Ballina

- Supported grant applications from members and partners, with project development, grant writing support and Letters of Support
- Engaged a contractor for operational support to update RLI processes and records including establishment of an operational budget and asset register
- Maintained assets including: Updated computers, purchased a phone and remote safety beacon
- Member of North Coast Regional Network and Landcare NSW
- Sponsored
 - Lismore City Council Biodiversity Awards
 - Big Scrub Landcare Manual update
- Published 3 newsletters and commenced update of RLI brochure and website
- Social media page with 800+ followers and average reach of 3,000+
- Delivered events
 - Terania Creek Celebration Channon Festival Stall
 - Science in the Pub: Reading the Weather
 - Lismore River Fest- stall
 - Science in the Pub: Climate Change and reforestation
 - Water Wednesday Stall
 - Science in the Pub: To feed or not to feed
 - Tree Planting at Simes Bridge for Big Scrub Day
 - Presentation at Landcare NSW Conference
 - Rising Strong project- 2040 film night at Lismore’s Starcourt Arcade
 - Science in the Pub: Australian Rainforest Seeds
 - Avocados & Bees event
 - Climate Ready Revegetation Project Workshops



Figure 7: Catching bugs at Native Pollinators field day

Moving Forward

In the coming year our focus will be:

- To facilitate and advocate for individuals, groups, and the wider community for Landcare
- To provide education opportunities on best practise for land and water management
- To embed a Landcare ethos of caring for land, water and community
- To engage with the Bundjalung community on caring for land and water

With thanks to all Landcarers working across the Richmond catchment